



GOOD MORNING
Have Good Trading Day

FRIDAY



Price is what you pay.
Value is what you get.

- Warren Buffet



MARKET PULSE

INDIAN INDICES

NAME	CMP	NET CH.	%
SENSEX	25341	+3	+0.01
NIFTY	7738	+3	+0.04

INDIAN ADR'S

SYMBOL	CLOSE	GAIN/ LOSS %
DRREDDY	45.19	-0.29
HDFCBANK	61.63	+0.77
ICICIBK	7.16	+0.06
INFY	19.02	+0.14
TATAMOTOR	29.05	+0.02
WIPRO	12.58	+0.05

FII AND MF ACTIVITY

SYMBOL	In Crs.
FIIs Eq (Provisional)	4056.62
FIIs Index Future	3193.60
FIIs Index Options	-1386.30
FIIs Stock Future	-658.47
FIIs Stock Options	95.80
DIIs Eq (Provisional)	-2890.57

CURRENCY

RBI RATE	31-MAR-2016
RUPEE - \$	66.3329
EURO	75.0955
YEN 100	59.0600
GBP	95.0882

MARKET PULSE

GLOBAL INDICES

NAME	CMP	NET CH.	%
DOW	17685	-31	-0.18
NASDAQ	4869	+0.55	+0.01
NIKKEI	16287	-470	-2.81
HANG SENG	20609	-167	-0.81
SGX NIFTY	7751	-36	-0.46

WORLD COMMODITIES

FUTURE	U\$\$	CHANGES
CRUDE	38.18	-0.16
NATURAL GAS	1.961	+0.002
GOLD	1232.90	-2.7
SILVER	15.395	-0.069
COPPER	2.1855	+0.0025

WORLD EVENTS

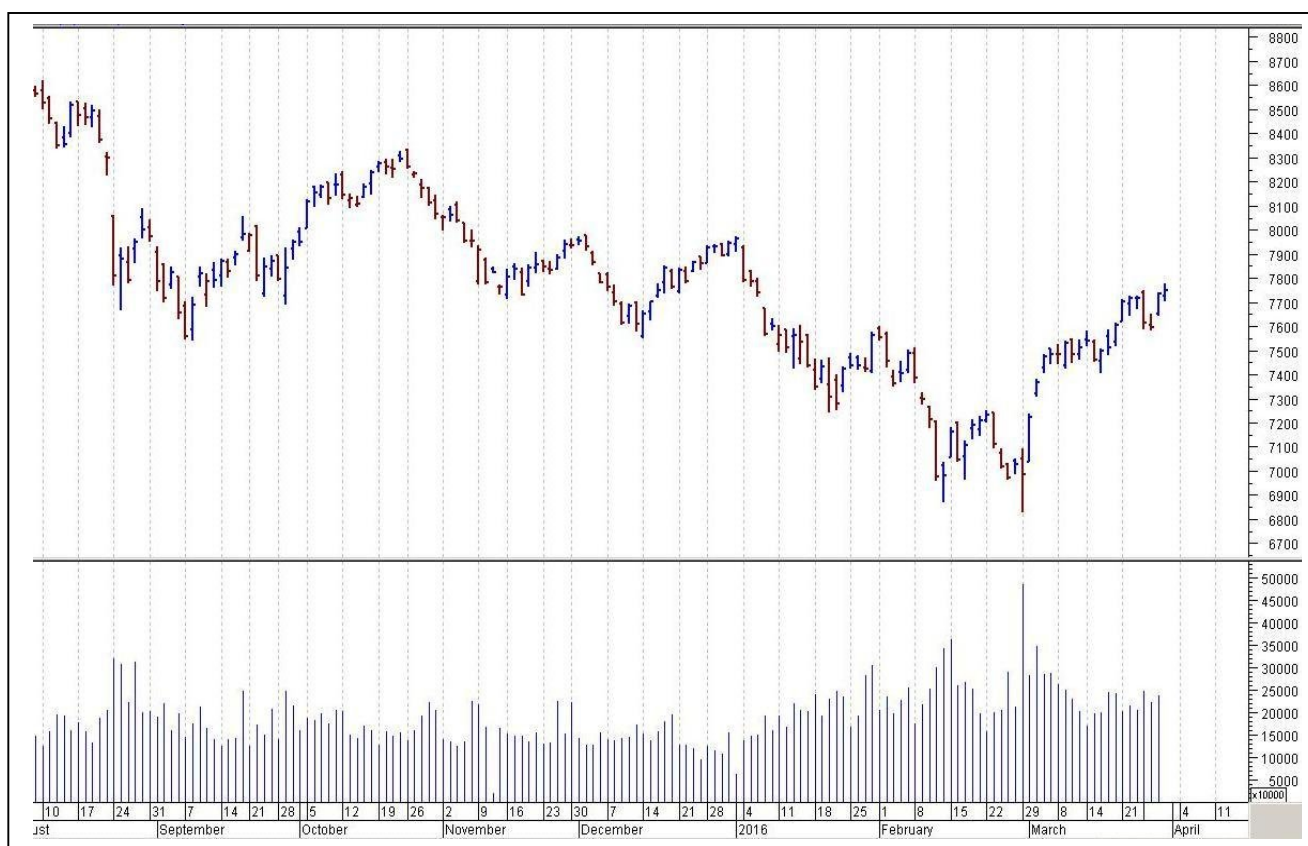
- US:Average Hourly Earnings m/m
- Non-Farm Employment Change
- Unemployment Rate
- ISM Manufacturing PMI
- UK:Manufacturing PMI

TOP STORY

- DishmanPharma Acquires Further 50% Stake InSchutzDishman Biotech for 3 lakh Euros.
- ICICI: Puts on hold its plan to sell home finance division (Mint)
- ONGC looking at acquiring a controlling stake in the GSPC promoted PanditDeendayal block in KG Basin in AP
- HCL Tech / Geometric - Deal may value Geometric at \$150-200 mn: B
- JP Associates, UltraTech Ink Deal - revised deal valuation at 15900 cr
- Tata Motors sells Subsidiary Sheba Properties for 405 Cr
- Ashapura Intimates Fashion board Approves Merger With Momai Apparels
- MEP Infra JV Declared Successful Bidder For 4 Laning Nagpur Road
- Shriram Transport - Madras HC Approves Merger of Shriram Equipment Finance With Co
- IL&FS Transport buys GRICL Rail Bridge & Rajasthan Land Holdings



NIFTY CHART



MARKET COMMENTARY

Final day of the financial year turned extremely volatile towards the end and markets somehow managed to eke out slender gains on March F&O expiry session. Markets traded with tradition for most part of the day's trade, as sentiments remained up-beat with Finance Minister Arun Jaitley stating that Australian future and super funds be exposed to India, as he called for increase in investment by Australia businesses in India as they can get better returns on their investment. For today's trade Nifty likely to trade in the range between 7755 – 7775 in the upper side and 7715 – 7685 in the lower side.

MARKET LEVELS

	CMP	SUPPORT LEVELS				RESISTANCE LEVELS			
NIFTY	7738	7715	7685	7665	7635	7755	7775	7795	7825
USDINR	66.50	66.4	66.35	66.25	66.2	66.55	66.65	66.7	66.75



BULK DEALS (BSE)

SCRIP	CLIENT NAME	BUY/SELL	QUANTITY	PRICE
VIMALOIL	RAJENDRA SHAH ARUNA	B	100,000	50.67
PRERINFRA	VISHAL MUKESH KUMAR SHAH	S	40,000	23.23

BULK DEALS (NSE)

SCRIP	CLIENT NAME	BUY/SELL	QUANTITY	PRICE
HDIL	CITIGROUP GLOBAL MARKETS MAURITIUS PVT LTD	BUY	2100000	73.17
HECPROJECT	WEALTH FIRST PORTFOLIO MANAGERS PRIVATE LIMITED	BUY	16800	95.94
IFCI	CITIGROUP GLOBAL MARKETS MAURITIUS PVT LTD	BUY	10500000	24.64
SADBHIN	AMANSA HOLDINGS PRIVATE LIMITED	BUY	2087580	102.98

SCRIP'S IN F&O BAN

(To resume for normal trading below 80% of market wide limit required)

NIL

Initial Public Offering (IPO)

Company Name	Security type	Issue Start Date	Issue End Date	Status
Equitas Holdings Ltd	Equity	Apr 5, 2016	Apr 7, 2016	Forthcoming



NIFTY 50 STOCKS: SUPPORT & RESISTANCE

Symbol	Close	Support 1	Support 2	Pivot Point	Resistance1	Resistance2
ACC	1381.90	1364.40	1346.90	1379.70	1397.20	1412.50
ADANI PORTS	247.70	243.47	239.23	246.73	250.97	254.23
AMBUJACEM	232.55	230.17	227.78	232.08	234.47	236.38
AXISBANK	444.15	438.57	432.98	443.78	449.37	454.58
ASIANPAINT	868.40	860.92	853.43	872.58	880.07	891.73
BAJAJ-AUTO	2405.95	2384.03	2362.12	2420.52	2442.43	2478.92
BANKBARODA	147.00	145.03	143.07	147.22	149.18	151.37
BHARTIARTL	350.80	346.02	341.23	351.33	356.12	361.43
BHEL	113.85	112.67	111.48	114.18	115.37	116.88
BOSCH LTD	20784.50	20473.67	20162.83	20736.83	21047.67	21310.83
BPCL	904.30	894.87	885.43	908.38	917.82	931.33
CAIRN	153.85	150.95	148.05	153.75	156.65	159.45
CIPLA	511.95	507.23	502.52	512.62	517.33	522.72
COALINDIA	291.95	289.35	286.75	293.60	296.20	300.45
DRREDDY	3035.20	3004.80	2974.40	3033.90	3064.30	3093.40
GAIL	356.40	351.97	347.53	356.83	361.27	366.13
GRASIM	3844.15	3816.23	3788.32	3840.02	3867.93	3891.72
HCLTECH	814.10	807.83	801.57	816.17	822.43	830.77
HDFC	1105.60	1096.08	1086.57	1107.52	1117.03	1128.47
HDFCBANK	1071.15	1064.50	1057.85	1071.70	1078.35	1085.55
HEROMOTOCO	2945.70	2914.88	2884.07	2950.42	2981.23	3016.77
HINDALCO	87.95	86.63	85.32	87.82	89.13	90.32
HINDUNILVR	869.50	858.10	846.70	866.90	878.30	887.10
ICICIBANK	236.65	233.12	229.58	237.23	240.77	244.88
IDEA	110.20	106.93	103.67	111.02	114.28	118.37
INDUSINDBK	967.60	946.13	924.67	958.07	979.53	991.47
INFY	1218.30	1202.43	1186.57	1216.17	1232.03	1245.77
ITC	328.25	324.60	320.95	328.55	332.20	336.15
KOTAKBANK	680.65	673.53	666.42	684.22	691.33	702.02
LT	1216.70	1208.80	1200.90	1219.40	1227.30	1237.90
LUPIN	1479.25	1466.02	1452.78	1484.23	1497.47	1515.68
M&M	1210.70	1200.87	1191.03	1213.83	1223.67	1236.63
MARUTI	3716.30	3670.62	3624.93	3709.68	3755.37	3794.43
NTPC	128.85	127.52	126.18	129.68	131.02	133.18
ONGC	214.10	211.65	209.20	214.60	217.05	220.00
PNB	84.70	83.93	83.17	85.17	85.93	87.17
POWERGRID	139.10	138.25	137.40	139.35	140.20	141.30
RELIANCE	1045.20	1033.27	1021.33	1044.63	1056.57	1067.93
SBIN	194.25	191.48	188.72	195.12	197.88	201.52
SUNPHARMA	820.00	811.38	802.77	820.52	829.13	838.27
TATAMOTORS	386.60	380.20	373.80	386.90	393.30	400.00
TATAPOWER	64.65	63.47	62.28	64.28	65.47	66.28
TATASTEEL	319.70	314.43	309.17	319.67	324.93	330.17
TECHM	474.95	471.10	467.25	477.05	480.90	486.85
TCS	2520.30	2478.30	2436.30	2514.15	2556.15	2592.00
ULTRACEMCO	3228.75	3188.93	3149.12	3221.92	3261.73	3294.72
VEDL	89.85	87.20	84.55	91.85	94.50	99.15
WIPRO	564.25	557.63	551.02	563.82	570.43	576.62
YESBANK	865.05	857.40	849.75	866.20	873.85	882.65
ZEEL	386.95	376.90	366.85	382.60	392.65	398.35



CORPORATE ACTION / BOARD MEETINGS

NSE Download Ref.No.: NSE/CML/31993:- Face Value Split - Vivimed Labs Limited from Rs. 10 to Rs. 2 w.e.f. April 6, 2016

NSE Download Ref No. : NSE/CML/32082:- Change in Name of the Company - Styrolution ABS (India) Limited (STYABS) to INEOS Styrolution India Ltd (INEOSSTYRO) w.e.f April 4, 2016

BOARD MEETINGS

COMPANY NAME	DATE	PURPOSE	RS. PER SH.
HINDZINC	6-Apr-16	Dividend	24
INDNIPPON	6-Apr-16	Dividend	5
COLPAL	6-Apr-16	Dividend	3
VIVIMEDLAB	6-Apr-16	Face Value Split From Rs 10 To Rs 2	
CENTUM	6-Apr-16	Dividend	2
KPIT	6-Apr-16	Dividend	
MINDTREE	11-Apr-16	Dividend	2
DICIND	12-Apr-16	Annual General Meeting/Dividend	4
KSBPUMPS	12-Apr-16	Annual General Meeting/Dividend	5.5
SANOFI	13-Apr-16	Dividend	47
ABB	13-Apr-16	Annual General Meeting/Dividend	3.7
FOSECOIND	21-Apr-16	Dividend	7
MERCK	22-Apr-16	Annual General Meeting/Dividend	7.5
VESUVIUS	26-Apr-16	Dividend	6.25
CASTROLIND	27-Apr-16	Annual General Meeting/Dividend	5
RAIN	27-Apr-16	Annual General Meeting	

NEWS & RUMOURS:

- Gold (Spot Dollar) major support = \$1204/\$1175 & Resistance = \$1260/\$1290.
- Crude oil range->\$34 to \$44.
- U.S. Stocks Fluctuate as Dollar Slump Worsens, Treasuries Rise: - U.S. stocks were little changed amid the best month in five, as the March rebound that had global equities on the brink of erasing losses for 2016 faltered. The dollar headed for its worst quarter in more than five years.
- China Rating Outlook Cut to Negative from Stable by S&P: - Standard & Poor's has cut the outlook for China's credit rating to negative from stable, saying the nation's economic rebalancing is likely to proceed more slowly than the ratings firm had expected. The nation's credit rating is AA- with a negative outlook, S&P said in a statement, which also affirmed the long-term and A-1+ short-term sovereign credit ratings.
- Dollar remains at 5-month lows, eyes on U.S. jobs report: - The dollar continued to trade at five-month lows against the other major currencies on Thursday, after the release of downbeat U.S. jobless claims data and as sentiment on the greenback remained fragile ahead of Friday's nonfarm payrolls report.
- Gold prices add to gains after U.S. jobless claims, Fed speakers ahead: - Gold futures added to gains in North American trade on Thursday, after data showed the number of people who filed for unemployment assistance in the U.S. last week [rose more than expected](#).
- Oil prices edge higher, but growing stocks loom: - Oil futures rebounded from early losses on Thursday but the recovery was muted as the market's focus switched back to signs of growing oil stocks. Brent and WTI crude were on track for their strongest March since 2002, despite [U.S. crude](#) earlier in the day hitting a more than two-week low.

TRENDS & OUTLOOK – DATE: 01- Apr- 2016

PRECIOUS METALS:

COMMDITY (MCX)	S2	S1	PIVOT POINT	R1	R2
GOLD (June)	28191	28420	28759	28999	29275
SILVER (May)	34500	35700	36636	37799	38850

BASE METALS

COMMDITY (MCX)	S2	S1	PIVOT POINT	R1	R2
COPPER (Apr)	309	315	320.40	326	331
ZINC (Apr)	114.55	117.25	119.30	122.20	124.90
LEAD (Apr)	108.30	111.60	114.10	116.55	119.50
NICKEL (Apr)	536	549	563	585	599

ENERGY

COMMDITY (MCX)	S2	S1	PIVOT POINT	R1	R2
CRUDE OIL (Apr)	2352	2466	2545	2661	2727
NATURAL GAS (Apr)	122	127	132	138	144

DATE TALKS : TODAY'S ECONOMIC DATA :

FOMC Member Dudley Speaks, (Manufacturing PMI, Non-Manufacturing PMI, and Caixin Manufacturing PMI of China), Manufacturing PMI of GBP, Average Hourly Earnings, Non-Farm Employment Change, Unemployment Rate, Final Manufacturing PMI, ISM Manufacturing PMI, Revised UoM Consumer Sentiment, Construction Spending, ISM Manufacturing Prices, Revised UoM Inflation Expectations, Total Vehicle Sales, FOMC Member Mester Speaks.



Registered Office

Indira House, 3rd Floor, 5 Topiwala Lane,
Opp. Lemington Road Police Station, Grant Road (East), Mumbai - 400007.

Corporate Office

'Ramavat House' E-15, Saket Nagar, Indore - 452018 (M.P.)

Customer Care

Tel: +91-731-4097170/ 71/ 72/ 73/ 74 M. +91 93031 72345

Email: customercare@indiratrade.com www.indiratrade.com



INSTITUTIONAL DEALING UNIT

Africa House, 5, Topiwalla Lane, Lamington Road, Mumbai, 400007

Tel: +91 22 30080678 Fax : +91 22 23870767 Email : ie@indiratrade.com

Disclaimer

This report is for private circulation within the Indira Group. This report is strictly confidential and for information of the selected recipient only and may not be altered in any way, transmitted to, copied or distributed, in part or in whole, to any other person or to the media or reproduced in any form. This report should not be construed as an offer or solicitation to buy or sell any securities or any interest in securities. It does not constitute a personal recommendation or take into account the particular investment objectives, financial situations, or any such factor. The information, opinions estimates and forecasts contained here have been obtained from, or are based upon, sources we believe to be reliable, but no representation of warranty, express or implied, is made by us to their accuracy or completeness. Opinions expressed are our current opinions as of the date appearing on this material only and are subject to change without notice.